

H39368

-UN-01JAN94



JOHN DEERE 9500 AND SIDEHILL 9500 MAXIMIZER COMBINES

9500 (1989-)
SH9500 (1992-)

(SPECIFICATIONS AND DESIGN SUBJECT TO CHANGE WITHOUT NOTICE)

NOTE

FOR 900 SERIES PLATFORM PARTS INFORMATION, REFER TO JOHN DEERE 900 SERIES PLATFORM PARTS CATALOG - PC-2104.

FOR 40 SERIES CORN HEAD PARTS INFORMATION, REFER TO JOHN DEERE 40 SERIES CORN HEAD PARTS CATALOG - PC-1223.

FOR 50A SERIES ROW-CROP HEAD PARTS INFORMATION, REFER TO JOHN DEERE 50A SERIES ROW-CROP HEAD PARTS CATALOG - PC-1747.

FOR THREE-ROLLER BELT PICKUP PARTS INFORMATION, REFER TO JOHN DEERE THREE-ROLLER BELT PICKUP PARTS CATALOG - PC-2210.

FOR 918 AND 920 DRAPER PARTS INFORMATION, REFER TO JOHN DEERE 918 AND 920 DRAPER PLATFORMS PARTS CATALOG - PC-2212.

FOR 90 SERIES CORN HEAD PARTS INFORMATION, REFER TO JOHN DEERE 90 SERIES CORN HEAD PARTS CATALOG - PC-2404.

IMPORTANT

THIS PARTS CATALOG CONTAINS PARTS INFORMATION FOR THE 9500 AND SIDEHILL 9500 MAXIMIZER COMBINES. VINTAGE IS DETERMINED BY THE COMBINE SERIAL NUMBER OR THE PRODUCT IDENTIFICATION NUMBER (PIN). IT IS IMPORTANT THAT THE CORRECT NUMBERS BE USED WHEN ORDERING PARTS.

PRODUCT INFORMATION NUMBER (PIN) PLATE

THE PRODUCT IDENTIFICATION PLATE (PIN) IS LOCATED NEAR THE RIGHT-HAND SIDE OF THE TOOL BOX.
AN EXAMPLE OF THE TWO-LINES ON THIS PIN PLATE IS:

HO9500X640201
COMBINE

(FIRST LINE)

HO - MANUFACTURING UNIT (HARVESTER WORKS)

9500 - MODEL IDENTIFIER

X - CONFIGURATION CODE/MODEL IDENTIFIER SUFFIX

640201 - SEQUENTIAL NUMBER USED IN SERIAL NO. COLUMN

(SECOND LINE)

COMBINE - TYPE OF PRODUCT

COPYRIGHT (C) 1999. DEERE & COMPANY. MOLINE, ILLINOIS. ALL RIGHTS RESERVED.

THE ENGINE SERIAL NUMBER IS LOCATED ON THE RIGHT-HAND SIDE OF THE ENGINE BLOCK.

EXAMPLE OF 190 HP ENGINE

HP4064 -UN-01JAN94

HP4064 1 2 3 4 5 6 7
 | | | | | | |
 [6] [076] [T] [H] [001] [111337] [RG]

1. NUMBER OF CYLINDERS -6-
2. LITRE DISPLACEMENT -076-
3. TYPE OF AIR INTAKE -T-
4. FACTORY USER -H- HARVESTER
5. ENGINE VERSION (FIRST) -001-
6. ENGINE SERIAL NUMBER -111337-
7. ENGINE MANUFACTURER -RG- JOHN DEERE ENGINE WORKS

**Thanks very much for your reading,
Want to get more information,
Please click here, Then get the complete
manual**

JustClickHere 

NOTE:

**If there is no response to click on the link above,
please download the PDF document first, and then
click on it.**

**Have any questions please write to me:
admin@servicemanualperfect.com**

PARTS LISTING INFORMATION

SERIAL NUMBER OR PRODUCT IDENTIFICATION NUMBER (PIN) INFORMATION SHOWS ON WHICH MACHINES PART MAY BE USED; FOR EXAMPLE:

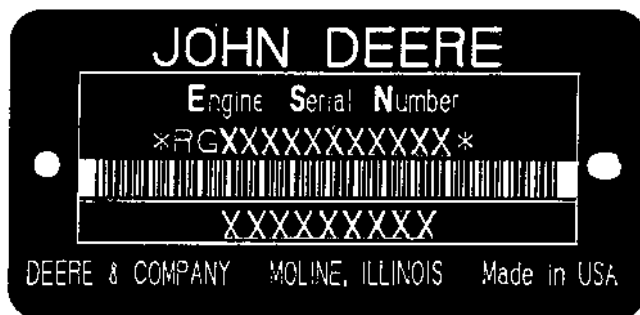
- THE PART CAN BE USED ON ALL MACHINES.
- 000000 THE PART CAN BE USED ON ALL MACHINES UP TO AND INCLUDING THE SERIAL NUMBER LISTED.
- 000000- THE PART CAN BE USED ON ALL MACHINES BEGINNING WITH THE SERIAL NUMBER LISTED.
- 000000-000000 THE PART CAN BE USED ON ALL MACHINES BETWEEN AND INCLUDING SERIAL NUMBERS LISTED.

WHEN XXXXXX'S ARE LISTED IN PLACE OF A SERIAL NUMBER, A SERIAL NUMBER CHANGE WAS MADE, BUT THE EXACT SERIAL NUMBER WAS NOT AVAILABLE WHEN THE CATALOG WAS PRINTED.

SHORT BLOCK SERIAL NUMBER PLATE

(-RGSB076882500)

RGP3513 -UN-01JAN94



RGP3513

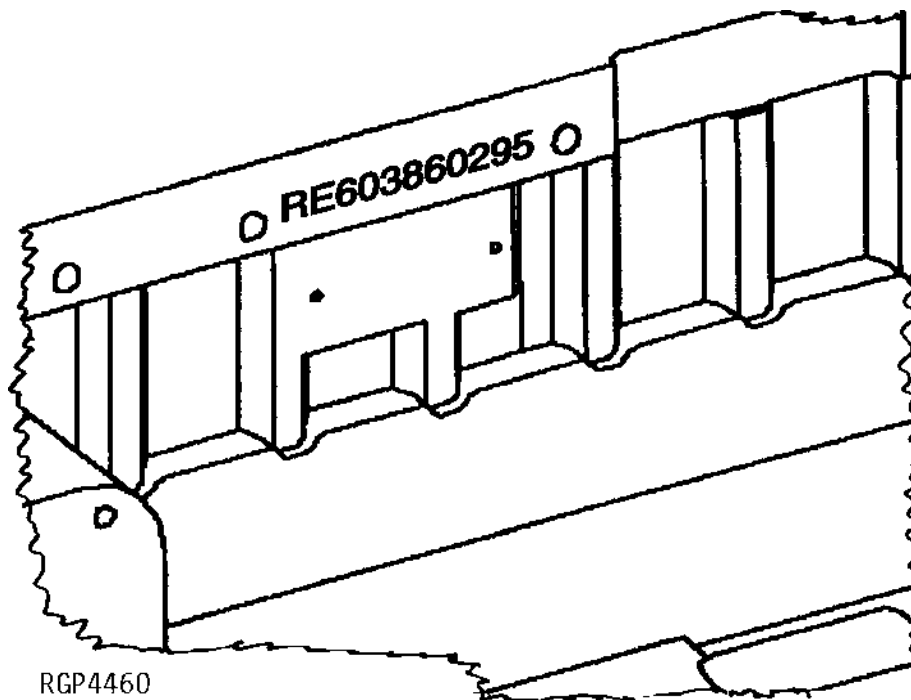
THE REPLACEMENT SHORT BLOCK ASSEMBLY HAS A SERIAL NUMBER PLATE ATTACHED. THE ORIGINAL ENGINE SERIAL NUMBER MUST BE STAMPED ONTO THE NEW PLATE IN THE BLANK SPACE PROVIDED, AS A REFERENCE FOR YOUR DEALER. THE PLATE CAN BE ATTACHED WITH (2) 37H44 DRIVE SCREWS.

- | | |
|---------------------------------------|----------------------------|
| 1. DESIGNATES ENGINE MANUFACTURER | RG - WATERLOO ENGINE WORKS |
| 2. DESIGNATES REPLACEMENT SHORT BLOCK | SB |
| 3. DESIGNATES LITERS | XXX- 076 (7.6) |
| 4. DESIGNATES THE PRODUCTION DATE | 8825 |
| 5. DESIGNATES COMPONENT SEQUENCE | 00 |

SHORT BLOCK SERIAL NUMBER IDENTIFICATION

(RE603860295-)

RGP4460 -UN-04MAR95



SERIAL NUMBER STAMPED INTO CASTING OF BLOCK NEAR PREVIOUS SERIAL NUMBER PLATE.

EXAMPLE: RE603860295

- | | |
|-----------------------------------|---------|
| 1. DESIGNATES SERVICE PART NUMBER | RE60386 |
| 2. DESIGNATES MONTH ASSEMBLED | 02 |
| 3. DESIGNATES YEAR ASSEMBLED | 95 |

1A8

9500 AND SIDEHILL 9500 MAXIMIZER™ COMBINES

TWO LINE BAR CODED ENGINE SERIAL NUMBER PLATE AND ADDITIONAL ENGINE INFORMATION (LOCATED ON FUEL INJECTION PUMP SIDE OF ENGINE)

RGP3513 -UN-01JAN94



RGP3513

FIRST LINE

DEFINES

RG - WATERLOO ENGINE WORKS

DESIGNATES ENGINE MANUFACTURER.

6

DESIGNATES NUMBER OF CYLINDERS.

076 (7.6 LITERS)

DESIGNATES LITER DISPLACEMENT.

T - TURBOCHARGED

DESIGNATES AIR INTAKE SYSTEM.

OR

H - AIR-TO-AIR

H

DESIGNATES HARVESTER WORKS VEHICLE.

XXXXXX

DESIGNATES ENGINE SERIAL NUMBER.

SECOND LINE

6076XXXXX

DESIGNATES ENGINE APPLICATION

ADDITIONAL ENGINE INFORMATION

ENGINE MODEL	ENGINE SERIAL NO.	APPLICATION
6076TH001 (190 H.P.) (-499999)	(9500 STD ENGINE)
6076HH003 (215 H.P.) (-499999)	(9500 STD ENGINE)
6076HH004 (235 H.P.) (-499999)	(9500 OPT ENGINE)
6076HH031 (215 H.P.)	(500000-565942)	(9500 STD ENGINE)
6076HH032 (235 H.P.)	(500000-567570)	(9500 OPT ENGINE)
6076HH032 (235 H.P.)	(500000-567570)	(9500 SIDE HILL ENGINE)
6076HH035 (218 H.P.)	(565943-)	(9500 STD ENGINE)
6076HH036 (238 H.P.)	(567571-)	(9500 OPT ENGINE)
6076HH036 (238 H.P.)	(567571-)	(9500 SIDEHILL)

DIRECTION ARROW

ARROWS ARE USED WITH ILLUSTRATIONS TO INDICATE THE FRONT OF THE UNIT. "RIGHT-HAND" AND "LEFT-HAND" SIDES ARE DETERMINED BY FACING IN THE DIRECTION OF MACHINE FORWARD TRAVEL.

BOX-ENCLOSED ILLUSTRATIONS

A KEY NUMBER, SHOWN IN THE PARTS LIST, IS ASSIGNED TO A BOX ENCLOSING ALL PARTS SOLD AS A SERVICE ASSEMBLY. A BOX NOT KEYED INCLUDES NON-CURRENT PARTS.

KITS

KIT INFORMATION WILL BE FOUND IMMEDIATELY FOLLOWING THE STORY IN WHICH IT IS USED. THE ILLUSTRATION IS REPEATED WITH ONLY THE KIT PARTS CALLED OUT AND WITH ALL OTHER PARTS SHOWN IN PHANTOM.

JDM REMANUFACTURED COMPONENTS

THE SERVICE PARTS LISTED IN THIS CATALOG ARE INTENDED FOR THE REPAIR OF ORIGINAL EQUIPMENT COMPONENTS. ALTHOUGH MOST SERVICE PARTS MAY BE USED TO REPAIR REMANUFACTURED COMPONENTS, THE REMANUFACTURED DESIGN MAY CHANGE PARTS SUFFICIENTLY SO THAT SERVICE PARTS ARE INADEQUATE OR NOT USABLE.

BOLT AND CAP SCREW STRENGTH IDENTIFICATION

BOLTS AND CAP SCREWS REQUIRED TO HAVE HIGH-STRENGTH QUALITIES EQUIVALENT TO SAE GRADE 8 ARE IDENTIFIED THROUGHOUT THIS CATALOG BY THE DESCRIPTION HS SAE 8. ALL STANDARD BOLTS AND CAP SCREWS ARE SAE GRADE 5 OR LOWER. BOLTS AND CAP SCREWS REQUIRED TO HAVE HIGH-STRENGTH QUALITIES EQUIVALENT TO PROPERTY CLASS 10.9 ARE IDENTIFIED THROUGHOUT THIS CATALOG BY THE DESCRIPTION 10.9. ALL STANDARD BOLTS AND CAP SCREWS ARE PROPERTY CLASS 8.8 OR LOWER.

SI UNITS OF MEASURE

METRIC DIMENSIONS ARE GIVEN, WHERE APPLICABLE, THROUGHOUT THIS PARTS CATALOG.

FOR INDIVIDUAL HEADER PARTS CATALOGS REFER TO:

PC2104 - PARTS CATALOG FOR JOHN DEERE 900 SERIES PLATFORMS

PC2210 - PARTS CATALOG FOR JOHN DEERE THREE ROLLER BELT PICKUP

PC2212 - PARTS CATALOG FOR JOHN DEERE 918 AND 920 DRAPER PLATFORMS

PC1747 - PARTS CATALOG FOR JOHN DEERE 50A SERIES ROW-CROP HEADS

PC1223 - PARTS CATALOG FOR JOHN DEERE 40 SERIES CORN HEADS

PC2404 - PARTS CATALOG FOR JOHN DEERE 90 SERIES CORN HEADS

TRADEMARKS

THROUGHOUT THIS PARTS CATALOG, YOU WILL FIND THE FOLLOWING DEERE & COMPANY TRADEMARKS:

DIAL-A-SPEED™

DIAL-A-MATIC™

HARVESTRAK™

CONTOUR MASTER™

POSI-TORQ™

TORQ-GARD SUPREME®

QUIK-TATCH™

CHANGE INDICATOR LINE

CHANGES AFFECTING THE ORDERING OF PARTS ARE IDENTIFIED BY VERTICAL LINES MARKED IN THE LEFT-HAND MARGIN OF REVISED PARTS LISTING IMAGES. A LINE IS ALSO AT THE LEFT-HAND EDGE OF THE SAME PART NUMBER IN THE NUMERICAL INDEX TO SHOW THE LOCATION OF REVISED INFORMATION.

FUNCTION CODE

(EXAMPLE - FC: 5000)

FUNCTION CODES ARE LOCATED ON EACH PAGE IN THE UPPER RIGHT-HAND CORNER IN THE BOX. THE CODE LISTED IS A GROUPING CODE THAT CAN BE USED FOR WARRANTIES AND FOR DTAC TO IDENTIFY CERTAIN AREAS.

COMPLETE GOODS LISTINGS

COMPLETE GOODS ARE IN BOLD FACE TYPE. ORDER SEPARATELY. DO NOT INCLUDE ON REPLACEMENT PARTS ORDER.

SECTION INDEX

- SECTION 10 - GENERAL INFORMATION
- SECTION 20 - ENGINE FAN, INTERCOOLER AND SCREENS
- SECTION 25 - 6076 ENGINE (SERIAL NUMBER -499999)
- SECTION 30 - 6076 ENGINE (SERIAL NUMBER 500000-)
- SECTION 32 - FUEL AND AIR
- SECTION 40 - ELECTRICAL - CONTINUED

- SECTION 50 - POWER TRAIN
- SECTION 60 - STEERING AND BRAKES
- SECTION 70 - HYDRAULICS
- SECTION 80 - SEPARATOR SHELL
- SECTION 90 - OPERATOR'S STATION
- SECTION 110 - FEEDER HOUSE
- SECTION 120 - THRESHING AND SEPARATION
- SECTION 121 - DRIVES
- SECTION 125 - RESIDUE DISPOSAL
- SECTION 130 - CLEAN GRAIN ELEVATOR, GRAIN TANK AND UNLOADING AUGER
- SECTION 160 - DIAL-A-MATIC HEADER HEIGHT CONTROL
- SECTION 170 - DECALS, BELTS AND CHAINS
- SECTION 180 - NUMERICAL INDEX

ALPHABETICAL INDEX

GRID	PAGE	GRID	PAGE
		A	
7H22		A/C COMPRESSOR (650201-) R134A	90 - 94
7H23		A/C COMPRESSOR COVER (650201-) R134A	90 - 95
7H22		A/C COMPRESSOR DIODE (650201-) R134A	90 - 94
7H22		A/C COMPRESSOR MANIFOLD (650201-) R134A	90 - 94
7H23		A/C COMPRESSOR PULLEY (650201-) R134A	90 - 95
7H22		A/C COMPRESSOR SEAL (650201-) R134A	90 - 94
7H25		A/C COMPRESSOR SEAL KIT (650201-) R134A	90 - 97
1C15		A/C CONDENSER, AIR INTER COOLER AND RADIATOR WITH OIL COOLER	20 - 20
7C5		ACCESS DOOR, ENGINE, HANDRAILS AND RADIATOR DOOR	80 - 8
7D15		ACCESS SHIELD, L.H., SERVICE	80 - 42
7D13		ACCESS SHIELD, R.H., SERVICE	80 - 40
6D21		ACCUMULATOR AND MOUNTING, ONE GALLON (655201-)	70 - 42
6D17		ACCUMULATOR AND MOUNTING, ONE-HALF GALLON (SINGLE)	70 - 38
6C6		ACCUMULATOR PRESSURE GAUGE AND WIRING HARNESS	70 - 2
6D19		ACCUMULATOR, DUAL AND MOUNTING (-655200) ONE-HALF GALLON	70 - 40
5C5		ACTUATOR, PARK BRAKE (-640200)	60 - 2
2G11		ADAPTER, COLD WEATHER STARTING AID	32 - 10
1C13		ADAPTER, ENGINE BLOCK COOLANT HEATER	20 - 18
4C18		ADAPTER, TRANSMISSION	50 - 13
3D22		ADAPTER, WIRING HARNESS (CONTOUR MASTER)	40 - 42
3C17		ADAPTOR HARNESS, DIAL-A-MATIC	40 - 12
7G2		ADJUST FORE-AND-AFT, SEAT	90 - 48
5D24		ADJUSTABLE REAR AXLE	60 - 45
5D25		ADJUSTABLE REAR AXLE	60 - 46
5E4		ADJUSTABLE REAR AXLE SPINDLE HOUSING	60 - 51
9D19		ADJUSTING BRACKET, CYLINDER DRIVE, DUAL-RANGE	121 - 42
7G20		ADJUSTING MECHANISM, ARMREST (640201-)	90 - 66
7G18		ADJUSTING MECHANISM, ARMREST, R.H. (-640200)	90 - 64
3F9		ADJUSTING MOTOR, CONCAVE	40 - 78
3E23		ADJUSTING MOTOR, SEPARATOR FAN DRIVE	40 - 68
2G13		AIR CLEANER AND INTAKE TUBES - GRAIN SIDEHILL (-645200)	32 - 12
2G13		AIR CLEANER AND INTAKE TUBES - GRAIN 9500 (-637128)	32 - 12
2G15		AIR CLEANER, ENGINE (6076, HH032) (645201-)	32 - 14
3D1		AIR CONDITIONER AND HEATER (-660200) (WIRING HARNESS)	40 - 20
3D9		AIR CONDITIONER AND HEATER SWITCH	40 - 28
3D7		AIR CONDITIONER PRESSURIZER FAN KIT (640201-650200)	40 - 26
3D1		AIR CONDITIONER WIRING HARNESS (-660200)	40 - 20
3D3		AIR CONDITIONER WIRING HARNESS (660201-)	40 - 22
7F12		AIR CONDITIONING AND HEATER DUCTS	90 - 33
7H17		AIR CONDITIONING COMPRESSOR (-650200) R-12	90 - 88
6G3		AIR CONDITIONING CONDENSER AND OIL COOLER	70 - 100
7H11		AIR CONDITIONING SYSTEM	90 - 82
7H13		AIR CONDITIONING SYSTEM, COMPRESSOR (-650200) R-12 REFRIGERANT	90 - 84
7H15		AIR CONDITIONING SYSTEM, COMPRESSOR (650201-) R134A	90 - 86
7H9		AIR CONDITIONING/HEATER AND PRESSURIZING FAN	90 - 80
7H7		AIR CONDITIONING/HEATER HOUSING AND FILTERS	90 - 78
3D5		AIR CONDITIONER THERMOSTAT KIT (630201-640200)	40 - 24
2G13		AIR DUCT, AIR CLEANER SIDEHILL (-645200)	32 - 12
1C2		AIR DUCT, ROTARY SCREEN	20 - 6
1C1		AIR DUCT, ROTARY SCREEN (-640200)	20 - 4
7F11		AIR FILTER AND HOUSING, CAB	90 - 32
3E15		AIR FILTER WARNING SWITCH, ENGINE PLUGGED	40 - 60
2G15		AIR INTAKE TUBES, ENGINE (6076, HH032) (645201-)	32 - 14
1C15		AIR INTER COOLER, RADIATOR WITH OIL COOLER AND A/C CONDENSER	20 - 20
7G6		AIR SEAT SUSPENSION (660201-)	90 - 52
7G8		AIR SEAT SUSPENSION KITS (665201-)	90 - 54
7G10		AIR SEAT SUSPENSION KITS (665201-)	90 - 56
7G12		AIR SEAT SUSPENSION KITS (665201-)	90 - 58
7G14		AIR SEAT SUSPENSION KITS (665201-)	90 - 60
3D3		AIR SEAT WIRING HARNESS (660201-)	40 - 22
7G8		AIR SUSPENSION KITS, SEAT (665201-)	90 - 54
7G10		AIR SUSPENSION KITS, SEAT (665201-)	90 - 56
7G12		AIR SUSPENSION KITS, SEAT (665201-)	90 - 58
7G14		AIR SUSPENSION KITS, SEAT (665201-)	90 - 60
7G6		AIR SUSPENSION, SEAT (660201-)	90 - 52
3E17		AIR TEMPERATURE SWITCH, INLET	40 - 62
3E9		ALTERNATOR	40 - 54
2F22		ALTERNATOR ADJUSTING STRAP	30 - 91
1H4		ALTERNATOR ADJUSTING STRAP (6076) (EARLY DESIGN)	25 - 100
3F7		ALTERNATOR MOUNTING	40 - 76
2F22		ALTERNATOR SUPPORT STRAP	30 - 91
1H4		ALTERNATOR SUPPORT STRAP (6076) (EARLY DESIGN)	25 - 100
3F3		ALTERNATOR, SHEAVE AND BELT MOTOROLA-PRESTOLITE (-637627)	40 - 72
3F4		ALTERNATOR, SHEAVE AND BELT - BOSCH (637628-)	40 - 73
3F1		ALTERNATOR, VOLTAGE REGULATOR (90 AMP) MOTOROLA-PRESTOLITE (-646145)	40 - 70
3F5		ALTERNATOR, VOLTAGE REGULATOR (95 AMP) BOSCH (637628-)	40 - 74
3D16		ANTENNA, SPEAKERS AND RADIO	40 - 36
9D11		ARM, LOCKOUT, DUAL-RANGE	121 - 34
4F1		ARM, STEERING	50 - 72

ALPHABETICAL INDEX - CONTINUED

GRID		PAGE	GRID		PAGE
2F17	ARMATURE (DENSO) (12V F4)	30 - 86	10E7	AUGER, HORIZONTAL UNLOADING (17 FT. AND 20 FT.)	130 - 54
1G21	ARMATURE (DENSO) (12V F4) (ESN 136851-499999)	25 - 92	10E14	AUGER, HORIZONTAL UNLOADING, DRIVE GEARCASE	130 - 61
1H1	ARMATURE, STARTER (ND) (NO. 028000-3292) (6076)(EARLY DESIGN)	25 - 97	10C18	AUGER, LOADING, CLEAN GRAIN	130 - 16
7G22	ARMREST (L.H.)	90 - 68	10C17	AUGER, LOADING, CLEAN GRAIN FOLD (660201-)	130 - 15
7G20	ARMREST ADJUSTING MECHANISM (640201-)	90 - 66	10F6	AUGER, LOWER TAILINGS, BELTS	170 - 3
7G18	ARMREST ADJUSTING MECHANISM (R.H.) (-640200)	90 - 64	9I1	AUGER, SHAFT AND TIGHTENER, LOWER TAILINGS	125 - 64
3C19	ARMREST CONTROL PANEL	40 - 14	9I15	AUGER, UPPER TAILINGS	125 - 78
3C17	ARMREST WIRING HARNESS	40 - 12	10D13	AUGER, VERTICAL, LOWER GEAR CASE	130 - 36
7G16	ARMREST WITH GLOVEBOX, R.H.	90 - 62	10E11	AUGERS, GRAIN TANK CROSS	130 - 58
8I5	ARMS, FRAME, PRECLEANER CHAFFER	120 - 60	8H9	AUGERS, SHOE GRAIN SUPPLY AND HOUSING	120 - 40
2D6	ARMS, ROCKER	30 - 24	8H11	AUGERS, SHOE GRAIN SUPPLY AND HOUSING	120 - 42
1E9	ARMS, ROCKER (EARLY DESIGN)	25 - 27	3C9	AUX FIELD LIGHTS SWITCH, OPTIONAL	40 - 4
3C19	ASHTRAY	40 - 14	3C15	AUXILIARY FIELD LIGHTING	40 - 10
2C13	ASSEMBLY, COMPLETE BLOCK (ESN 500000-)	30 - 6	4C19	AXLE SPACERS (RING AND PINION FINAL DRIVE)	50 - 14
6F1	ASSEMBLY, SIX STACK SOLENOID CONTROL VALVE (660201-)	70 - 74	5E1	AXLE SPINDLES, REAR (FIXED AND ADJUSTABLE REAR AXLE)	60 - 48
5D1	ATTENUATOR, STEERING	60 - 22	4D19	AXLE, FINAL DRIVE (RING AND PINION)	50 - 40
10D15	AUGER AND CHARGE HOUSING, VERTICAL UNLOADING	130 - 38	5D23	AXLE, FIXED REAR	60 - 44
10F5	AUGER BELTS	170 - 2	4C17	AXLE, FRONT (RING AND PINION FINAL DRIVE)	50 - 12
9I9	AUGER CHAIN TIGHTENER, LOWER TAILINGS	125 - 72	4C18	AXLE, FRONT (SIDEHILL) (RING AND PINION FINAL DRIVE)	50 - 13
8H8	AUGER CLEANOUT DOOR, SHOE GRAIN SUPPLY, HANDLES AND LATCHES	120 - 39	4D20	AXLE, GEAR AND BEARINGS, FINAL DRIVE (RING AND PINION) (SIDEHILL)	50 - 41
10E15	AUGER COUNTERSHAFT DRIVE, UNLOADING	130 - 62	5D24	AXLE, REAR, ADJUSTABLE	60 - 45
10E13	AUGER COVERS AND CHANNEL, CROSS	130 - 60	5D25	AXLE, REAR, ADJUSTABLE	60 - 46
10E17	AUGER DRIVE BELT GUIDE, UNLOADING	130 - 64	5D21	AXLE, REAR, SUPPORT	60 - 42
9I15	AUGER DRIVE SHIELD, UPPER TAILINGS	125 - 78			
7D7	AUGER DRIVE SHIELDS (R.H.)	80 - 34		B	
9I11	AUGER DRIVE TIGHTENER, LOWER TAILINGS	125 - 74	10D7	BASE, GRAIN TANK	130 - 30
9I15	AUGER DRIVE, UPPER TAILINGS	125 - 78	3F13	BATTERIES, CABLE AND HOLDDOWN	40 - 82
9I13	AUGER HOUSING AND PADDLE ASSEMBLY, UPPER TAILINGS	125 - 76	4D16	BEARING CAP AND HOUSING, FINAL DRIVE (RING AND PINION)	50 - 37
10D23	AUGER HOUSING, HORIZONTAL UNLOADING (14- AND 17-FT.)	130 - 46	4D17	BEARING CAP AND HOUSING, FINAL DRIVE (RING AND PINION) (SIDEHILL)	50 - 38
10D24	AUGER HOUSING, HORIZONTAL UNLOADING (14- AND 17-FT.)	130 - 47	8J1	BEARING KIT, STRAW WALKERS (650201-665200)	120 - 80
10C14	AUGER HOUSING, LOADING, UPPER CLEAN GRAIN	130 - 12	8J3	BEARING KIT, STRAW WALKERS (665201-)	120 - 82
10C16	AUGER HOUSING, LOADING, UPPER CLEAN GRAIN (660201-)	130 - 14	10E9	BEARING PLATE, CROSS AUGER, L.H.	130 - 56
10D21	AUGER HUB SUPPORT AND SWITCH, HORIZONTAL UNLOADING	130 - 44	4E21	BEARING, COVER AND QUILL	50 - 67
3E21	AUGER LIGHT, UNLOADING AND GRAIN TANK DUAL LEVEL MONITOR HARNESS	40 - 66	1E1	BEARING, THRUST	25 - 19
10E18	AUGER LOWER LUBE BANK, UNLOADING	130 - 66	2C24	BEARING, THRUST (6076)	30 - 17
3E5	AUGER SENSOR AND WIRING HARNESS, UNLOADING (660201-)	40 - 50	1E24	BEARING, WATER PUMP (EARLY DESIGN) (ESN -499999)	25 - 42
6F11	AUGER SWING CYLINDER AND MOUNTING, UNLOADING (-650200)	70 - 84	2D14	BEARING, WATER PUMP (ESN 500000-)	30 - 32
6E15	AUGER SWING SOLENOID CONTROL VALVE (650201-)	70 - 62	4D23	BEARINGS AND PINION, FINAL DRIVE (RING AND PINION) (SIDEHILL)	50 - 44
6E13	AUGER SWING, SOLENOID CONTROL VALVE DOUBLE PILOTTED (-650200)	70 - 60	4D20	BEARINGS, AXLE AND GEARS, FINAL DRIVE (RING AND PINION) (SIDEHILL)	50 - 41
10D19	AUGER SWIVEL SUPPORT AND BRACES	130 - 42	9I7	BEARINGS, ELEVATOR CONVEYOR CHAIN AND SPROCKETS, TAILINGS	125 - 70
10D17	AUGER SWIVEL, HORIZONTAL UNLOADING	130 - 40	4D19	BEARINGS, FINAL DRIVE (RING AND PINION)	50 - 40
10C14	AUGER TRANSITION HOUSING	130 - 12	4D5	BEARINGS, INPUT SHAFT, GEARS AND LUBE PUMP, TRANSMISSION	50 - 26
9I3	AUGER TROUGH, LOWER TAILINGS	125 - 66	1E1	BEARINGS, MAIN	25 - 19
10E20	AUGER UPPER LUBE BANK, UNLOADING	130 - 68	2C24	BEARINGS, MAIN (6076)	30 - 17
3E5	AUGER WIRING HARNESS, UNLOADING (660201-)	40 - 50			
10E5	AUGER, HORIZONTAL UNLOADING (14- AND 17-FT.)	130 - 52			

ALPHABETICAL INDEX - CONTINUED

GRID		PAGE	GRID		PAGE
4D21	BEARINGS, PINION AND SHAFTS, FINAL DRIVE (RING AND PINION)	50 - 42	2C15	BLOCK, SHORT (ESN 500000-) (WITHOUT HEAD BOLTS)	30 - 8
4D7	BEARINGS, PINION SHAFT AND GEARS TRANSMISSION	50 - 28	1D15	BLOCK, SHORT (HH004-OPT. HP) (-499999)(WITHOUT HEAD BOLTS)	25 - 8
4E16	BEARINGS, SEALS, SHAFT AND OUTER COVER CAM LOBE MOTOR	50 - 62	1D15	BLOCK, SHORT (TH001-STD. HP)(EARLY DESIGN -499999)(WITHOUT HEAD BOLTS)	25 - 8
8I23	BEARINGS, STRAW WALKER (-650200)	120 - 78	1D19	BLOCK, SHORT (WITH HEAD BOLTS) (TH001,HH001,HH003)(ESN -499999)	25 - 12
10F8	BEATER BELTS SHEAVES	170 - 5	1D17	BLOCK, SHORT (6076HH003)(STD. HP)(LATE DESIGN -499999)(WITHOUT HEAD BOLTS)	25 - 10
8H7	BEATER COVER	120 - 38	1E10	BOLTS, CYLINDER HEAD (ESN -499999)	25 - 28
9E5	BEATER DRIVE SHEAVES AND TIGHTENER	121 - 52	2D4	BOLTS, CYLINDER HEAD (ESN 500000-)	30 - 22
8G18	BEATER GRATE AND 13-BAR CONCAVE ASSEMBLY	120 - 24	3F5	BOSCH ALTERNATOR AND VOLTAGE REGULATOR (95 AMP) (637628-)	40 - 74
8G13	BEATER GRATE CURTAIN	120 - 18	3F4	BOSCH ALTERNATOR, SHEAVE AND BELT (637628-)	40 - 73
8H5	BEATER SHAFT AND DRIVE BELT.....	120 - 36	7F3	BOX, TOOL (660201-)	90 - 24
9E19	BELT PICKUP / REEL DRIVE, PUMP MOUNTING SHEAVE	121 - 66	10D19	BRACES AND AUGER SWIVEL SUPPORT	130 - 42
3F4	BELT, ALTERNATOR	40 - 73	5C22	BRACKET, BRAKE CABLE SUPPORT (645231-)	60 - 19
3F3	BELT, ALTERNATOR AND SHEAVE MOTOROLA-PRESTOLITE (-637627)	40 - 72	8E18	BRACKET, FEEDER CONVEYOR	110 - 66
8H5	BELT, DRIVE, SHAFT AND BEATER.....	120 - 36	3G11	BRACKET, REEL SPEED MOTOR.....	40 - 104
1C6	BELT, ENGINE FAN DRIVE	20 - 10	9I8	BRACKET, TAILINGS DRIVE AND LOWER TROUGH SUPPORT	125 - 71
8D15	BELT, FAN, DUST, LH SIDE FEEDER HOUSE-RETROFIT INSTALLATION.....	110 - 38	8H3	BRACKETS, INDICATOR AND CABLES, CONCAVE	120 - 34
7F23	BELT, OPERATOR'S SEAT (665201-)	90 - 44	8D7	BRACKETS, LEVELING CABLES AND SHEAVES SIDEHILL	110 - 30
1B23	BELT, ROTARY SCREEN (-645200)	20 - 1	3E16	BRACKETS, LOW SHAFT SPEED SENSORS	40 - 61
1B24	BELT, ROTARY SCREEN (645201-)	20 - 2	6E24	BRACKETS, SOLENOID CONTROL VALVE	70 - 72
7F24	BELT, SEAT - PASSENGER SEAT (665201-)	90 - 45	5C5	BRAKE ACTUATOR, PARK (-640200)	60 - 2
7G1	BELT, SEAT - RETROFIT KIT (MACHINES PRIOR TO 1996 MODEL YEAR)	90 - 46	5C22	BRAKE CABLE SUPPORT BRACKET (645231-)	60 - 19
10F6	BELTS, AIR CONDITIONER COMPRESSOR	170 - 3	5C9	BRAKE LINES AND HOSES, PARKING, UPPER (-640200)	60 - 6
10F5	BELTS, AUGER	170 - 2	5C7	BRAKE LINES, LOWER, PARKING (-640200)	60 - 4
10F8	BELTS, BEATER	170 - 5	5C15	BRAKE LINES, MASTER CYLINDER AND RESERVOIR	60 - 12
10F6	BELTS, CLEAN GRAIN ELEVATOR.....	170 - 3	5C17	BRAKE MASTER CYLINDER	60 - 14
10F5	BELTS, CONVEYOR FEEDER	170 - 2	5C11	BRAKE PEDAL AND FRAME, PARKING	60 - 8
10F6	BELTS, COOLING FAN.....	170 - 3	5C13	BRAKE PEDALS AND MASTER CYLINDERS.....	60 - 10
10F6	BELTS, CYLINDER DRIVE	170 - 3	5C19	BRAKE SHOES AND DRUM.....	60 - 16
10F6	BELTS, DRIVE, CYLINDER INTERMEDIATE	170 - 3	5C21	BRAKE SLAVE CYLINDER	60 - 18
10F5	BELTS, ENGINE DRIVE	170 - 2	5C4	BRAKE, PARKING, VALVE (-640200)	60 - 1
10F7	BELTS, FAN, CLEANING	170 - 4	3F17	BREAKERS, CIRCUIT, ENGINE COMPARTMENT	40 - 86
10F5	BELTS, FEEDER CONVEYOR	170 - 2	3F14	BREAKERS, CIRCUIT, ENGINE COMPARTMENT (-660200)	40 - 83
10F7	BELTS, FEEDER HOUSE	170 - 4	3F15	BREAKERS, CIRCUIT, ENGINE COMPARTMENT (660201-)	40 - 84
10F7	BELTS, HEADER AND REEL	170 - 4	1E6	BUSHING, CAMSHAFT (ESN -499999) (TH001, HH001, HH004)	25 - 24
10F8	BELTS, LOWER TAILINGS AUGER.....	170 - 5	2C11	BUSHING, CAMSHAFT (ESN 500000-)	30 - 4
10F6	BELTS, LOWER TAINLINGS AUGER	170 - 3	2D3	BUSHING, CAMSHAFT (ESN 500000-)	30 - 21
10F6	BELTS, ROTARY SCREEN.....	170 - 3	1E7	BUSHING, CAMSHAFT (6076HH003)	25 - 25
10F7	BELTS, STRAW CHOPPER	170 - 4	5D3	BUTTON, EITHER AID START.....	60 - 24
10F7	BELTS, STRAW SPREADER	170 - 4	7H1	BUTTON, EITHER AID START.....	90 - 72
10F7	BELTS, UNLOADING AUGERS	170 - 4	5D3	BUTTON, HORN	60 - 24
10F8	BELTS, UNLOADING SYSTEM.....	170 - 5	7H1	BUTTON, HORN	90 - 72
10F8	BELTS, UPPER TAILINGS AUGER	170 - 5	1E20	BYPASS VALVE, OIL COOLER (ESN -156313).....	25 - 38
10F5	BELTS, WALKER.....	170 - 2	1E21	BYPASS VALVE, OIL COOLER (ESN 156314-499999)	25 - 39
2F17	BENDIX DRIVE (12V F4)	30 - 86	2D12	BYPASS VALVE, OIL FILTER (ESN 500000-)	30 - 30
6E11	BI-DIRECTIONAL MODULE, SOLENOID CONTROL VALVE, REEL LIFT AND CYLINDER SPEED	70 - 58			
3D10	BLADE, WIPER (LONG)	40 - 30			
2C13	BLOCK ASSEMBLY, COMPLETE (ESN 500000-).....	30 - 6			
6G19	BLOCK SOLENOID, MAIN VALVE	70 - 117			
1D11	BLOCK, CYLINDER (EARLY DESIGN) (WITHOUT HEAD BOLTS)	25 - 4			
1C13	BLOCK, ENGINE COOLANT HEATER.....	20 - 18			
2C17	BLOCK, SHORT (WITH HEAD BOLTS)	30 - 10			

ALPHABETICAL INDEX - CONTINUED

GRID		PAGE	GRID		PAGE
1E22	BYPASS VALVE, OIL FILTER (EARLY DESIGN) (ESN -499999).....	25 - 40	2D25	CENTER HOUSING, TURBOCHARGER (AIRESEARCH)	30 - 43
C					
7F11	CAB AIR FILTER AND HOUSING	90 - 32	1F13	CENTER HOUSING, TURBOCHARGER (AIRESEARCH) (ESN -499999)	25 - 57
3C6	CAB DOME LIGHT	40 - 1	2E1	CENTER HOUSING, TURBOCHARGER (SCHWITZER)	30 - 44
7E13	CAB DOOR LATCH	90 - 10	1F12	CENTER HOUSING, TURBOCHARGER (SCHWITZER) (ESN -499999).....	25 - 56
7E17	CAB FRAME AND SUPPORT.....	90 - 14	3F21	CENTRAL ELECTRONICS MODULE AND CIRCUIT BOARDS	40 - 90
7E15	CAB GLASS AND DOOR	90 - 12	9G21	CHAFF SPREADER (BELT TYPE) FRAME, SHIELDS AND HANDLES (-650200)	125 - 36
7I3	CAB HARDWARE KIT	90 - 100	9H15	CHAFF SPREADER (BELT TYPE) HOSES, LINES AND MOTOR (-650200)	125 - 54
7E11	CAB INTERIOR TRIM PANELS	90 - 8	9H3	CHAFF SPREADER (BELT TYPE) PAN AND SEALS (-650200)	125 - 42
7F7	CAB L.H. LANDING AND MIRROR (650201-)	90 - 28	9H17	CHAFF SPREADER (DUAL MOTOR) HOSES AND LINES (650201-)	125 - 56
7F9	CAB LANDING AND MIRROR, R.H.....	90 - 30	9H5	CHAFF SPREADER (DUAL MOTOR) PAN, WINGS AND SEALS (650201-)	125 - 44
3C6	CAB LIGHT, DOME	40 - 1	9G23	CHAFF SPREADER (DUAL MOTOR) SHIELDS AND HANDLES (650201-655714).....	125 - 38
7F21	CAB OPERATOR'S SEAT AND BACKREST	90 - 42	9H1	CHAFF SPREADER (DUAL MOTOR) SHIELDS AND HANDLES (655715-)	125 - 40
7E5	CAB PANELS AND FLOOR MAT	90 - 2	9H9	CHAFF SPREADER CONTROL, CHECK VALVE, ROD AND KNOB.....	125 - 48
3C11	CAB POST INSTRUMENT PANEL	40 - 6	9G17	CHAFF SPREADER DISC (BELT TYPE) (-650200)	125 - 32
7F13	CAB POST INSTRUMENT PANEL	90 - 34	9G19	CHAFF SPREADER DISC (DUAL MOTOR) (650201-)	125 - 34
7E9	CAB REAR AND SIDE SEALS	90 - 6	9H11	CHAFF SPREADER LINES AND FITTINGS	125 - 50
7E19	CAB ROOF AND SUPPORTS.....	90 - 16	9H13	CHAFF SPREADER LINES, HOSES, VALVE AND PUMP	125 - 52
3C13	CAB ROOF LIGHTS	40 - 8	6C12	CHAFF SPREADER MOTOR (EATON) (655929-)	70 - 8
7G4	CAB SEAT HEIGHT ADJUSTER (VERTICAL CONTROL).....	90 - 50	9H7	CHAFF SPREADER MOUNTING SUPPORT	125 - 46
7E7	CAB SOUND DEADENING, FOAM AND SEALS.....	90 - 4	9H8	CHAFF SPREADER MOUNTING SUPPORT (SIDEHILL).....	125 - 47
3C7	CAB WIRING HARNESS.....	40 - 2	9H19	CHAFF SPREADER PUMP.....	125 - 58
4C7	CABLE, SWITCH AND DRIVE LEVER, HYDROSTATIC	50 - 2	8I7	CHAFFER ELEMENT.....	120 - 62
8H3	CABLES, BRACKETS AND INDICATOR, CONCAVE	120 - 34	8I9	CHAFFER ELEMENT.....	120 - 64
4C9	CABLES, CONTROL, HYDROSTATIC DRIVE (-645200)	50 - 4	8I11	CHAFFER EXTENSION ELEMENT	120 - 66
3F13	CABLES, HOLDDOWN AND BATTERIES	40 - 82	8I13	CHAFFER FRAME	120 - 68
4C11	CABLES, HYDROSTATIC DRIVE CONTROL (645201-)	50 - 6	8I5	CHAFFER FRAME ARMS, PRECLEANER	120 - 60
4E15	CAM LOBE MOTOR	50 - 61	8I1	CHAFFER FRAME, PRE-CLEANER.....	120 - 56
4E22	CAM, CARRIER AND PISTONS	50 - 68	8H23	CHAFFER, PRECLEANING.....	120 - 54
1E6	CAMSHAFT (ESN -499999)(W/R86565 GEAR) (TH001, HH001, HH004)	25 - 24	8F9	CHAIN IDLERS AND SHIELD BRACKETS, DRIVE (SIDEHILL).....	110 - 82
2D3	CAMSHAFT (ESN 500000-)	30 - 21	9I9	CHAIN TIGHTENER, LOWER TAILINGS AUGER	125 - 72
1E7	CAMSHAFT (W/R105488 GEAR)(6076HH003)	25 - 25	9I10	CHAIN TIGHTENER, UPPER TAILINGS DRIVE	125 - 73
1E6	CAMSHAFT BUSHING (ESN -499999) (TH001, HH001, HH004)	25 - 24	10C6	CHAIN, CONVEYOR AND LOWER ELEVATOR, CLEAN GRAIN.....	130 - 4
2C11	CAMSHAFT BUSHING (ESN 500000-)	30 - 4	10C8	CHAIN, CONVEYOR AND LOWER ELEVATOR, CLEAN GRAIN.....	130 - 6
2D3	CAMSHAFT BUSHING (ESN 500000-)	30 - 21	8E18	CHAIN, FEEDER CONVEYOR DRIVE	110 - 66
1E7	CAMSHAFT BUSHING (6076HH003)	25 - 25	8E20	CHAIN, IDLER SHAFT AND DRUM, FEEDER CONVEYOR, SIDEHILL	110 - 68
2D6	CAMSHAFT FOLLOWER.....	30 - 24	9I7	CHAIN, TAILINGS ELEVATOR CONVEYOR, SPROCKETS, BEARINGS	125 - 70
1E9	CAMSHAFT FOLLOWER (EARLY DESIGN)	25 - 27	10E13	CHANNEL AND COVERS, CROSS AUGER	130 - 60
1E6	CAMSHAFT FOLLOWER (ESN -499999) (TH001, HH001, HH004)	25 - 24	10D15	CHARGE HOUSING AND VERTICAL UNLOADING AUGER.....	130 - 38
2D3	CAMSHAFT FOLLOWER (ESN 500000-)	30 - 21	6G12	CHARGE PRESSURE HOSE (SIDEHILL)	70 - 110
1E7	CAMSHAFT FOLLOWER (6076HH003)	25 - 25	6G10	CHARGE PRESSURE HOSE (640201-)	70 - 108
1E6	CAMSHAFT GEAR (ESN -499999)(W/R86565 GEAR)(TH001, HH001, HH004)	25 - 24	4E7	CHARGE PUMP, HYDROSTATIC DRIVE (RING AND PINION)	50 - 52
2D3	CAMSHAFT GEAR (ESN 500000-)	30 - 21	9H9	CHECK VALVE, ROD, KNOB AND CONTROL CHAFF SPREADER	125 - 48
10D13	CAP, GRAIN TANK CLEAN OUT CHUTE	130 - 36			
1E4	CAP, OIL FILLER (HH003) (EARLY DESIGN).....	25 - 22			
1E5	CAP, OIL FILLER (TH001, HH001, HH004) (ESN -499999)	25 - 23			
1D13	CAPS, MAIN BEARING	25 - 6			
2C11	CAPS, MAIN BEARING (ESN 500000-).....	30 - 4			
4E24	CAPS, YOKE AND PIVOTS	50 - 70			
4E22	CARRIER, PISTONS AND CAM	50 - 68			
4H7	CASE DRAIN HYDRAULIC LINES, 4-WHEEL DRIVE	50 - 128			

ALPHABETICAL INDEX - CONTINUED

<i>GRID</i>		<i>PAGE</i>	<i>GRID</i>		<i>PAGE</i>
9G11	CHOPPER DOOR, STRAW.....	125 - 26	1G21	COIL, FIELD WINDING (12V F4) (ESN 136851-499999).....	25 - 92
9G3	CHOPPER, STRAW, HOUSING (-655100).....	125 - 18	1G25	COIL, STARTER (ND) (NO. 028000-3292) (6076) (EARLY DESIGN).....	25 - 96
9G3	CHOPPER, STRAW, KNIFEBACK (-655100).....	125 - 18	2G9	COLD WEATHER STARTING AID (-656805).....	32 - 8
10D13	CHUTE, GRAIN TANK CLEAN OUT CHUTE.....	130 - 36	2G11	COLD WEATHER STARTING AID (656806-).....	32 - 10
3C11	CIRCUIT BOARD, CAB POST INSTRUMENT PANEL.....	40 - 6	5D5	COLUMN, STEERING, LOWER.....	60 - 26
7F13	CIRCUIT BOARD, CAB POST INSTRUMENT PANEL.....	90 - 34	7H3	COLUMN, STEERING, LOWER.....	90 - 74
3C9	CIRCUIT BOARD, OVERHEAD CONSOLE PANEL.....	40 - 4	7H5	COLUMN, STEERING, LOWER.....	90 - 76
3F21	CIRCUIT BOARDS AND CENTRAL ELECTRONICS MODULE.....	40 - 90	5D3	COLUMN, STEERING, UPPER.....	60 - 24
3F17	CIRCUIT BREAKER RELAYS.....	40 - 86	7H1	COLUMN, STEERING, UPPER.....	90 - 72
3F14	CIRCUIT BREAKER RELAYS (-660200).....	40 - 83	1G23	COMMUTATOR END FRAME, STARTER (ND) (NO. 028000-3292) (6076)(EARLY DESIGN).....	25 - 94
3F15	CIRCUIT BREAKER RELAYS (660201-).....	40 - 84	7C11	COMPARTMENT, ENGINE (-640200).....	80 - 14
3F17	CIRCUIT BREAKERS, ENGINE COMPARTMENT.....	40 - 86	7C13	COMPARTMENT, ENGINE (-640200).....	80 - 16
3F14	CIRCUIT BREAKERS, ENGINE COMPARTMENT (-660200).....	40 - 83	7C15	COMPARTMENT, ENGINE (640201-).....	80 - 18
3F15	CIRCUIT BREAKERS, ENGINE COMPARTMENT (660201-).....	40 - 84	7C17	COMPARTMENT, ENGINE (640201-).....	80 - 20
10C24	CLEAN GRAIN ELEVATOR DRIVE TIGHTENER AND IDLER.....	130 - 22	2C13	COMPLETE BLOCK ASSEMBLY (ESN 500000-).....	30 - 6
10C22	CLEAN GRAIN ELEVATOR GEARCASE AND SHEAVE.....	130 - 20	7H17	COMPRESSOR COIL (-650200) R-12.....	90 - 88
10C12	CLEAN GRAIN ELEVATOR SHAFT, UPPER, SPROCKET AND SHEAVE.....	130 - 10	7H19	COMPRESSOR HARDWARE KIT (-650200) R-12.....	90 - 90
10D1	CLEAN GRAIN ELEVATOR SHIELDS, UPPER (-640528).....	130 - 24	7H24	COMPRESSOR HARDWARE KIT (650201-) R134A.....	90 - 96
10D3	CLEAN GRAIN ELEVATOR SHIELDS, UPPER (640529-).....	130 - 26	7H20	COMPRESSOR PARTS (-650200) R-12.....	90 - 92
10C10	CLEAN GRAIN ELEVATOR, UPPER.....	130 - 8	7H17	COMPRESSOR, AIR CONDITIONING (-650200) R-12.....	90 - 88
10C18	CLEAN GRAIN LOADING AUGER.....	130 - 16	10F6	COMPRESSOR, AIR CONDITIONING BELTS.....	170 - 3
10C17	CLEAN GRAIN LOADING AUGER, FOLD (660201-).....	130 - 15	7H13	COMPRESSOR, AIR CONDITIONING SYSTEM (-650200) R-12 REFRIGERANT.....	90 - 84
10C4	CLEAN GRAIN LOWER AUGER AND HINGED DOOR.....	130 - 2	7H15	COMPRESSOR, AIR CONDITIONING SYSTEM (650201-) R134A.....	90 - 86
10C6	CLEAN GRAIN LOWER ELEVATOR AND CONVEYOR CHAIN.....	130 - 4	7H17	COMPRESSOR, CLUTCH PULLEY (-650200) R-12.....	90 - 88
10C8	CLEAN GRAIN LOWER ELEVATOR AND CONVEYOR CHAIN.....	130 - 6	3F9	CONCAVE ADJUSTING MOTOR.....	40 - 78
10D13	CLEAN OUT CHUTE, GRAIN TANK.....	130 - 36	8G18	CONCAVE ASSEMBLY AND BEATER GRATE,13-BAR NARROW.....	120 - 24
2G13	CLEANER, AIR AND INTAKE TUBES - GRAIN SIDEHILL (-645200).....	32 - 12	8H3	CONCAVE INDICATOR, CABLE AND BRACKETS.....	120 - 34
2G13	CLEANER, AIR AND INTAKE TUBES - GRAIN 9500 (-637128).....	32 - 12	8G14	CONCAVE, RASP BAR AND GRATE.....	120 - 20
9E7	CLEANING FAN DRIVE, SEPARATOR.....	121 - 54	8G16	CONCAVE, RASP BAR AND GRATE.....	120 - 22
8H19	CLEANING FAN INTAKE SHIELDS (-643087).....	120 - 50	8G24	CONCAVE, SPIKE TOOTH.....	120 - 30
8H21	CLEANING FAN INTAKE SHIELDS (643088-).....	120 - 52	8G22	CONCAVE, SPIKE-TOOTH.....	120 - 28
8H13	CLEANING FAN LEAF SCREENS (CORN) (660999-).....	120 - 44	6G3	CONDENSER, AIR CONDITIONING AND OIL COOLER.....	70 - 100
8H15	CLEANING FANS AND SHROUDS.....	120 - 46	1D23	CONNECTING RODS.....	25 - 16
8H17	CLEANING FANS AND SHROUDS.....	120 - 48	2C22	CONNECTING RODS (6076).....	30 - 15
8C16	CLOSURE PLATES, FEEDER HOUSE - CONTOUR MASTER (660201-).....	110 - 14	3C17	CONNECTOR, HYDRO HANDLE.....	40 - 12
7H17	CLUTCH, COMPRESSOR (-650200) R-12.....	90 - 88	3F23	CONNECTORS AND TERMINALS, WEATHERPACK....	40 - 92
9D1	CLUTCH, HEADER ELECTROMAGNETIC.....	121 - 24	3C7	CONNECTORS, CAB.....	40 - 2
8E12	CLUTCH, SLIP, FEEDER HOUSE.....	110 - 60	3G7	CONNECTORS, ETHER START.....	40 - 100
7H17	COIL, COMPRESSOR (-650200) R-12.....	90 - 88	1G7	CONNECTORS, FUEL INJECTION PUMP HOUSING (ND) (TH001/HH003)(ESN -499999).....	25 - 76
5C4	COIL, ELECTRICAL - PARKING BRAKE VALVE (-640200).....	60 - 1	2E23	CONNECTORS, FUEL INJECTION PUMP HOUSING (ND) (6076HH031) (EARLY DESIGN F.I.P.).....	30 - 67
2F17	COIL, FIELD WINDING (12V F4).....	30 - 86	2E24	CONNECTORS, FUEL INJECTION PUMP HOUSING (RB)(HH031ORHH035)(LATE DESIGN F.I.P.).....	30 - 68
			1G15	CONNECTORS, FUEL INJECTION PUMP HOUSING (ROBERT BOSCH) (6076HH001/HH004).....	25 - 85

ALPHABETICAL INDEX - CONTINUED

GRID		PAGE	GRID		PAGE
1G8	CONNECTORS, FUEL INJECTION PUMP HOUSING (ROBERT BOSCH) (6076HH004).....	25 - 77	6C20	CONVERSION PARTS, HYDRAULIC, 200 SERIES CUTTING PLATFORM.....	70 - 16
2E22	CONNECTORS, FUEL INJECTION PUMP HOUSING (6076HH030, HH032, HH034, HH036).....	30 - 66	10F5	CONVEYOR AUGER BELTS,	170 - 2
3G9	CONNECTORS, HARNESS, UPPER, FOR 6076 ENGINE	40 - 102	9E3	CONVEYOR AUGERS, STRAW WALKER, SIEVE AND CHAFFER DRIVE	121 - 50
3G7	CONNECTORS, LOWER HARNESS FOR 6076 ENGINE	40 - 100	10C6	CONVEYOR CHAIN AND LOWER ELEVATOR, CLEAN GRAIN.....	130 - 4
3G16	CONNECTORS, SUPPLEMENTARY TERMINALS	40 - 109	10C8	CONVEYOR CHAIN AND LOWER ELEVATOR, CLEAN GRAIN.....	130 - 6
3C9	CONSOLE PANEL, OVERHEAD.....	40 - 4	8C20	CONVEYOR CHAIN RETURN FLOOR- SIDEHILL FEEDER HOUSE	110 - 18
8C16	CONTOUR MASTER - FEEDER HOUSE FRAME, TILT BEAM & CLOSURE PLATES (660201-).....	110 - 14	9I7	CONVEYOR CHAIN, SPROCKETS AND BEARINGS, TAILINGS ELEVATOR.....	125 - 70
8F15	CONTOUR MASTER DRIVESHAFT (660201-).....	110 - 88	2D24	COOLANT HEATER, ENGINE	30 - 42
6D11	CONTOUR MASTER HYDRAULIC HOSES, L.H SIDE (OPTIONAL) (660201-)	70 - 32	1C13	COOLANT HEATER, ENGINE BLOCK.....	20 - 18
8E7	CONTOUR MASTER LOCKOUT ADAPTER KIT (BELT PU & 4R CORN HEADS) (660201-)	110 - 54	2G21	COOLANT RECOVERY TANK	32 - 20
6E8	CONTOUR MASTER SOLENOID CONTROL RELIF VALVE	70 - 54	2D12	COOLER AND OIL FILTER HOUSING (ESN 500000-).....	30 - 30
6E20	CONTOUR MASTER SOLENOID CONTROL VALVE (660201-).....	70 - 68	1F3	COOLER, ENGINE OIL (EARLY DESIGN) (ESN -499999).....	25 - 46
6F19	CONTOUR MASTER TILT CYLINDER.....	70 - 92	2D12	COOLER, ENGINE OIL (ESN 500000-).....	30 - 30
6F20	CONTOUR MASTER TILT CYLINDER HOSES AND FITTINGS.....	70 - 93	6C16	COOLER, OIL, FEEDER HOUSE	70 - 12
3D22	CONTOUR MASTER WIRING HARNESS ADAPTER	40 - 42	10F6	COOLING FAN BELTS	170 - 3
8C14	CONTOUR MASTER, FEEDER HOUSE SHELL, WEAR PLATES AND SEALS (660201-)	110 - 12	9G9	CORN CURTAIN AND DEFLECTORS	125 - 24
8C18	CONTOUR MASTER, LOCKOUT ASSEMBLY (OPTIONAL) (660201-).....	110 - 16	8G7	CORN CYLINDER DOOR (ARGENTINA ONLY).....	120 - 12
3H3	CONTROL BOX, LEVEL SENSING	40 - 120	7D21	CORNER SHEET, DOOR, FRONT, (L.H.)	80 - 48
4C9	CONTROL CABLES, HYDROSTATIC DRIVE (-645200)	50 - 4	7D17	CORNER SHEET, R H FRONT	80 - 44
4C11	CONTROL CABLES, HYDROSTATIC DRIVE (645201-).....	50 - 6	7D19	CORNER SHEET, REAR, L H	80 - 46
3C19	CONTROL PANEL, ARMREST.....	40 - 14	9D21	COUNTERSHAFT DRIVE, SECONDARY.....	121 - 44
2E12	CONTROL UNIT, ELECTRONIC (6076HH032) (ROBERT BOSCH).....	30 - 56	10E15	COUNTERSHAFT DRIVE, UNLOADING AUGER	130 - 62
2E14	CONTROL UNIT, ELECTRONIC (6076HH036)	30 - 58	9C24	COUNTERSHAFT GEARCASE, PRIMARY (640101-).....	121 - 22
3F19	CONTROL UNIT, ELECTRONIC (ECU)	40 - 88	9C20	COUNTERSHAFT GEARCASE, PRIMARY (640101-).....	121 - 18
2E18	CONTROL UNIT, ELECTRONIC (6076HH031) (RB) (LATE DESIGN F.I.P.)	30 - 62	9C22	COUNTERSHAFT, PRIMARY, GEARCASE (-640100).....	121 - 20
2E20	CONTROL UNIT, ELECTRONIC (6076HH035) (RB) (LATE DESIGN F.I.P.)	30 - 64	9C18	COUNTERSHAFT, PRIMARY, GEARCASE (-640100).....	121 - 16
4F3	CONTROL VALVE (4WD)	50 - 74	1C10	COUPLING WITH HUB, ENGINE-TRANSMISSION.....	20 - 14
4F4	CONTROL VALVE (4WD) (655201-).....	50 - 75	1F7	COUPLING, INTAKE MANIFOLD (ESN -499999).....	25 - 50
6F1	CONTROL VALVE MODULE, SIX STACK SOLENOID ASSEMBLY & MOUNTINGS (660201-)	70 - 74	2F16	COVER STARTER SOLENOID (DENSO)	30 - 85
4F5	CONTROL VALVE SOLENOID	50 - 76	8H7	COVER, BEATER	120 - 38
6E15	CONTROL VALVE, AUGER SWING SOLENOID (650201-)	70 - 62	7H23	COVER, COMPRESSOR A/C (650201-) R134A	90 - 95
4E9	CONTROL VALVE, HYDROSTATIC DRIVE DISPLACEMENT (RING AND PINION)	50 - 54	7C13	COVER, ENGINE (-640200)	80 - 16
6E20	CONTROL VALVE, SOLENOID - CONTOUR MASTER (660201-).....	70 - 68	7C15	COVER, ENGINE (640201-).....	80 - 18
6G9	CONTROL VALVE, SOLENOID, ENGINE GEARCASE PRESSURE REGULATOR	70 - 106	7C17	COVER, ENGINE (640201-).....	80 - 20
6E16	CONTROL VALVE, SOLENOID, REEL FORE/AFT (-650200)	70 - 64	4E5	COVER, HYDROSTATIC DRIVE PUMP (RING AND PINION)	50 - 50
6E18	CONTROL VALVE, SOLENOID, REEL FORE/AFT (650201-).....	70 - 66	2D2	COVER, INJECTION PUMP ACCESS (ESN 500000-).....	30 - 20
9H9	CONTROL, CHECK VALVE, ROD AND KNOB, CHAFF SPREADER	125 - 48	1E5	COVER, INJECTION PUMP ACCESS (TH001,HH001,HH004)(ESN -499999)	25 - 23
3G17	CONVENIENCE OUTLET (660201-).....	40 - 110	1E4	COVER, INJECTION PUMP ACCESS (HH003) (EARLY DESIGN)	25 - 22
			4E18	COVER, INNER	50 - 64
			1E12	COVER, ROCKER ARM	25 - 30
			2D7	COVER, ROCKER ARM	30 - 25
			4E1	COVER, SHAFT, DRIVE PUMP, HYDROSTATIC (RING AND PINION)	50 - 46
			1G24	COVER, STARTER SOLENOID (EARLY DESIGN)	25 - 95

ALPHABETICAL INDEX - CONTINUED

GRID		PAGE	GRID		PAGE
8F20	COVER, THRESHING CYLINDER	120 - 1	9D13	CYLINDER DRIVE TIGHTENER, DUAL-RANGE	121 - 36
2D2	COVER, TIMING GEAR (ESN 500000-)	30 - 20	9D5	CYLINDER DRIVE, SINGLE RANGE	121 - 28
1E4	COVER, TIMING GEAR (HH003)(EARLY DESIGN)	25 - 22	9D7	CYLINDER DRIVE, SLOW SPEED.....	121 - 30
1E5	COVER, TIMING GEAR (TH001, HH001, HH004) (ESN -499999)	25 - 23	1E10	CYLINDER HEAD (ESN -499999)	25 - 28
10E13	COVERS AND CHANNEL, CROSS AUGER	130 - 60	2D4	CYLINDER HEAD (ESN 500000-)	30 - 22
1C17	CRANKCASE, ENGINE, OIL DRAIN.....	20 - 22	1E10	CYLINDER HEAD BOLTS (ESN -499999).....	25 - 28
8J5	CRANKS, STRAW WALKER, STRAW SPREADER DRIVE AND SHIELD	120 - 84	2D4	CYLINDER HEAD BOLTS (ESN 500000-).....	30 - 22
2C23	CRANKSHAFT (ESN 500000-)	30 - 16	1E10	CYLINDER HEAD GASKET (ESN -499999)	25 - 28
1D24	CRANKSHAFT (HH001 OR HH004) (ESN -499999)(MKD RE53201)	25 - 17	2D4	CYLINDER HEAD GASKET (ESN 500000-)	30 - 22
1D25	CRANKSHAFT (HH003) (LATE DESIGN-STD HP) (ESN -499999)(MKD RE53203 OR RE42675).....	25 - 18	1G16	CYLINDER HEAD GASKET KIT (ESN -499999).....	25 - 86
1D24	CRANKSHAFT (TH001 - EARLY DESIGN) (STD HP)(MKD RE53201).....	25 - 17	2F13	CYLINDER HEAD GASKET KIT (ESN 500000-).....	30 - 82
2F15	CRANKSHAFT DAMPER, NO PULLEY GROOVES	30 - 84	6D15	CYLINDER KIT, HEADER LIFT HYDRAULIC	70 - 36
1G18	CRANKSHAFT DAMPER, NO PULLEY GROOVES (EARLY DESIGN)	25 - 88	5D18	CYLINDER KIT, STEERING	60 - 39
2D2	CRANKSHAFT FRONT OIL SEAL (ESN 500000-).....	30 - 20	1D23	CYLINDER LINERS (ESN -499999)	25 - 16
1E5	CRANKSHAFT FRONT OIL SEAL (TH001,HH001,HH004)(ESN -499999)	25 - 23	2C22	CYLINDER LINERS (6076)	30 - 15
1E4	CRANKSHAFT FRONT OIL SEAL (HH003) (EARLY DESIGN)	25 - 22	6G16	CYLINDER PINS, LEVELING	70 - 114
10E9	CROSS AUGER BEARING PLATE, L.H.	130 - 56	8G9	CYLINDER SHEAR BAR	120 - 14
10E13	CROSS AUGER COVERS AND CHANNEL.....	130 - 60	6E11	CYLINDER SPEED AND REEL LIFT, SOLENOID CONTROL VALVE.....	70 - 58
10E11	CROSS AUGERS, GRAIN TANK	130 - 58	6E6	CYLINDER SPEED HYDRAULIC LINES AND HOSES ..	70 - 52
7G24	CUP HOLDER	90 - 70	5C21	CYLINDER, BRAKE SLAVE	60 - 18
8G13	CURTAIN, BEATER GRATE	120 - 18	6F9	CYLINDER, DRIVE, GRAIN TANK UNLOADING.....	70 - 82
8J7	CURTAIN, SEPARATOR (RASP BAR CYLINDER).....	120 - 86	6D14	CYLINDER, HEADER LIFT HYDRAULIC	70 - 35
8J9	CURTAIN, SEPARATOR (SPIKE-TOOTH CYLINDER)	120 - 88	6D13	CYLINDER, HYDRAULIC, HEADER LIFT	70 - 34
9H21	CURTAIN, SPREADER	125 - 60	6F7	CYLINDER, HYDRAULIC, UNLOADING AUGER SWING, LINES AND HOSES	70 - 80
9H23	CURTAIN, SPREADER (641681-)	125 - 62	6G14	CYLINDER, LEVELING	70 - 112
9G9	CURTAINS AND DEFLECTORS, CORN	125 - 24	6G15	CYLINDER, LEVELING	70 - 113
10D9	CURTAINS, GRAIN TANK.....	130 - 32	5C17	CYLINDER, MASTER, BRAKE	60 - 14
6C20	CUTTING PLATFORM, 200 SERIES CONVERSION PARTS	70 - 16	5D17	CYLINDER, STEERING.....	60 - 38
6F11	CYLINDER AND MOUNTING, UNLOADING AUGER SWING (-650200)	70 - 84	8G11	CYLINDER, THRESHING, RASP BAR.....	120 - 16
4E1	CYLINDER BLOCK	50 - 46	8G20	CYLINDER, THRESHING, SPIKE TOOTH.....	120 - 26
1D11	CYLINDER BLOCK (EARLY DESIGN (WITHOUT HEAD BOLTS)	25 - 4	6F19	CYLINDER, TILT - CONTOUR MASTER	70 - 92
2C11	CYLINDER BLOCK FITTINGS (ESN 500000-).....	30 - 4	6F20	CYLINDER, TILT, HOSES AND FITTINGS - CONTOUR MASTER.....	70 - 93
1D13	CYLINDER BLOCK FITTINGS (WITH HEAD BOLTS)	25 - 6	6F13	CYLINDER, UNLOADING AUGER SWING HYDRAULIC (650201-656568)	70 - 86
4E11	CYLINDER BLOCK, HYDROSTATIC DRIVE	50 - 56	6F15	CYLINDER, UNLOADING AUGER SWING HYDRAULIC (656569-)	70 - 88
4E13	CYLINDER BLOCK, HYDROSTATIC DRIVE	50 - 58	5C13	CYLINDERS, MASTER, AND BRAKE PEDALS.....	60 - 10
8F20	CYLINDER COVER, THRESHING	120 - 1	D		
8G3	CYLINDER DOOR (CORN & GRAIN) (650201-655864).....	120 - 8	2C23	DAMPER KEY	30 - 16
8G1	CYLINDER DOOR (FOR CORN) (-650200)	120 - 6	2F15	DAMPER, CRANKSHAFT, NO PULLEY GROOVES	30 - 84
8G5	CYLINDER DOOR (655865-)	120 - 10	1G18	DAMPER, CRANKSHAFT, NO PULLEY GROOVES (EARLY DESIGN)	25 - 88
8G7	CYLINDER DOOR, CORN (ARGENTINA ONLY).....	120 - 12	10G12	DECALS, FRONT.....	170 - 34
9D19	CYLINDER DRIVE ADJUSTING BRACKET, DUAL-RANGE	121 - 42	10G9	DECALS, LEFT-HAND.....	170 - 30
9D9	CYLINDER DRIVE GEAR CASE, DUAL-RANGE.....	121 - 32	10G12	DECALS, REAR	170 - 34
9D15	CYLINDER DRIVE INTERMEDIATE SHAFT MOUNTING, DUAL-RANGE	121 - 38	10F9	DECALS, SAFETY AND LOCATIONS	170 - 6
9D17	CYLINDER DRIVE INTERMEDIATE SHEAVE, DUAL-RANGE	121 - 40	10F11	DECALS, SAFETY AND LOCATIONS	170 - 8
			10F13	DECALS, SAFETY AND LOCATIONS	170 - 10
			10F15	DECALS, SAFETY AND LOCATIONS	170 - 12
			10F17	DECALS, SAFETY AND LOCATIONS	170 - 14
			10F19	DECALS, SAFETY AND LOCATIONS - FRENCH	170 - 16
			10F21	DECALS, SAFETY AND LOCATIONS - FRENCH.....	170 - 18
			10F23	DECALS, SAFETY AND LOCATIONS - FRENCH.....	170 - 20
			10G1	DECALS, SAFETY AND LOCATIONS - FRENCH.....	170 - 22
			10G3	DECALS, SAFETY AND LOCATIONS - FRENCH.....	170 - 24
			10G14	DECALS, TOP	170 - 36
			9F12	DECK, SUPPORTS AND FINS, STRAW CHOPPER.....	125 - 2
			9G9	DEFLECTORS AND CURTAINS, CORN	125 - 24
			3C17	DIAL-A-MATIC ADAPTOR HARNESS	40 - 12

ALPHABETICAL INDEX - CONTINUED

GRID		PAGE	GRID		PAGE
10F1	DIAL-A-MATIC ELECTRICAL HARNESS	160 - 4	4G23	DRIVE MOTOR, HYDROSTATIC	50 - 120
10E23	DIAL-A-MATIC HEADER HEIGHT CONTROL HYDRAULIC LINE AND VALVE BLOCK	160 - 2	4E11	DRIVE MOTOR, HYDROSTATIC (RING AND PINION)	50 - 56
6D16	DIAL-A-MATIC HEADER HEIGHT CONTROL, VALVE BLOCK SOLENOID	70 - 37	4E5	DRIVE PUMP COVER, HYDROSTATIC (RING AND PINION)	50 - 50
10E24	DIAL-A-MATIC HEADER HEIGHT CONTROL, VALVE BLOCK SOLENOID	160 - 3	4E1	DRIVE PUMP, COVER, SHAFT, HYDROSTATIC (RING AND PINION)	50 - 46
4D9	DIFFERENTIAL GEARS AND SHAFTS	50 - 30	4H1	DRIVE PUMP, HYDROSTATIC HYDRAULIC PUMP CONNECTING HARDWARE	50 - 122
4D11	DIFFERENTIAL GEARS AND SHAFTS (SIDEHILL)	50 - 32	6F5	DRIVE PUMP, REEL/BELT PICKUP	70 - 78
7H22	DIODE, A/C COMPRESSOR (650201-) R134A	90 - 94	9C16	DRIVE SHAFT, GEARCASE AND PRIMARY COUNTERSHAFT	121 - 14
1D13	DIPSTICK TUBE	25 - 6	8F11	DRIVE SHAFT, HEADER - SH - (645301-)	110 - 84
1E8	DIPSTICK, ENGINE OIL (EARLY DESIGN) (ESN -499999)	25 - 26	4D13	DRIVE SHAFTS, FINAL (SIDEHILL)	50 - 34
2C21	DIPSTICK, ENGINE OIL (ESN 500000-)	30 - 14	7D11	DRIVE SHIELD, R.H. REAR	80 - 38
9G17	DISC, CHAFF SPREADER (BELT TYPE) (-650200)	125 - 32	7D7	DRIVE SHIELDS, AUGER, (R.H.)	80 - 34
9G19	DISC, CHAFF SPREADER (DUAL MOTOR) (650201-)	125 - 34	8C8	DRIVE SHIELDS, CONTOUR MASTER FEEDER HOUSE (661186-)	110 - 6
6G20	DIVIDER MOUNTING, FLOW	70 - 118	7D9	DRIVE SHIELDS, MUD AND FAN (L.H.)	80 - 36
6G20	DIVIDER VALVE, FLOW	70 - 118	8C4	DRIVE SHIELDS, SAFETY STOP, FEEDER HOUSE	110 - 2
7E15	DOOR AND GLASS, CAB	90 - 12	8C6	DRIVE SHIELDS, SAFETY STOP, FEEDER HOUSE (SIDEHILL)	110 - 4
7E13	DOOR LATCH, CAB	90 - 10	9F7	DRIVE SHIELDS, STRAW CHOPPER (640301-)	121 - 78
7D21	DOOR, CORNER SHEET, LEFT - HAND FRONT	80 - 48	9G7	DRIVE SPROCKETS, STRAW CHOPPER (655101-)	125 - 22
8G3	DOOR, CYLINDER (CORN & GRAIN) (650201-655864)	120 - 8	4C22	DRIVE SUPPORT SHIELD, FINAL (SIDEHILL)	50 - 17
8G1	DOOR, CYLINDER (FOR CORN) (-650200)	120 - 6	10C24	DRIVE TIGHTENER, ELEVATOR AND IDLER, CLEAN GRAIN	130 - 22
8G5	DOOR, CYLINDER (655865-)	120 - 10	9E17	DRIVE TIGHTENER, FEEDER HOUSE	121 - 64
8G7	DOOR, CYLINDER DOOR (ARGENTINA ONLY)	120 - 12	8E5	DRIVE TIGHTENER, FIXED SPEED FEEDER HOUSE	110 - 52
10C4	DOOR, HINGED, CLEAN GRAIN LOWER AUGER	130 - 2	9I11	DRIVE TIGHTENER, LOWER TAILINGS AUGER	125 - 74
1C1	DOOR, ROTARY SCREEN (-640200)	20 - 4	8E3	DRIVE TIGHTENER, VARIABLE SPEED	110 - 50
9G11	DOOR, STRAW CHOPPER	125 - 26	4C13	DRIVE WHEELS	50 - 8
6E13	DOUBLE PILOTED, AUGER SWING, SOLENOID CONTROL VALVE (-650200)	70 - 60	4C14	DRIVE WHEELS	50 - 9
5C9	DRAIN PLUG, PARKING BRAKE (-640200)	60 - 6	4C15	DRIVE WHEELS, HIGH FLOATATION	50 - 10
2G3	DRAIN VALVE, FUEL TANK	32 - 2	9E19	DRIVE, BELT PICKUP / REEL PUMP MOUNTING SHEAVE	121 - 66
2G7	DRAIN VALVE, FUEL TANK	32 - 6	2F17	DRIVE, BENDIX (12V F4)	30 - 86
2G19	DRAIN VALVE, RADIATOR	32 - 18	9E7	DRIVE, CLEANING FAN, SEPARATOR	121 - 54
10E17	DRIVE BELT GUIDE, UNLOADING AUGER	130 - 64	10F6	DRIVE, CYLINDER INTERMEDIATE, BELTS	170 - 3
9I8	DRIVE BRACKET, TAILINGS AND LOWER TROUGH SUPPORT	125 - 71	10F6	DRIVE, CYLINDER, BELTS	170 - 3
8F9	DRIVE CHAIN IDLERS AND SHIELD BRACKETS (SIDEHILL)	110 - 82	9E15	DRIVE, FAN, SPEED CONTROL SHEAVE LINKAGE	121 - 62
9I10	DRIVE CHAIN TIGHTENER, UPPER TAILINGS	125 - 73	4D15	DRIVE, FINAL (RING AND PINION)	50 - 36
4C9	DRIVE CONTROL CABLES, HYDROSTATIC (-645200)	50 - 4	9D23	DRIVE, GEARCASE, STRAW WALKER	121 - 46
4C11	DRIVE CONTROL CABLES, HYDROSTATIC (645201-)	50 - 6	4F14	DRIVE, HYDROSTATIC, LOWER OIL LINES (FOUR WHEEL DRIVE) (-655200)	50 - 86
4E9	DRIVE DISPLACEMENT CONTROL VALVE, HYDROSTATIC (RING AND PINION)	50 - 54	4F16	DRIVE, HYDROSTATIC, LOWER OIL LINES (FOUR WHEEL DRIVE) (655201-)	50 - 88
2C23	DRIVE GEAR, OIL PUMP (ESN 500000-)	30 - 16	4F24	DRIVE, HYDROSTATIC, LOWER OIL LINES (FOUR WHEEL DRIVE) (655201-)	50 - 96
1D24	DRIVE GEAR, OIL PUMP (HH001 OR HH004) (ESN -499999)(MKD RE53201)	25 - 17	4F18	DRIVE, HYDROSTATIC, LOWER OIL LINES (TWO WHEEL DRIVE) (655201-)	50 - 90
1D25	DRIVE GEAR, OIL PUMP (HH003) (LATE DESIGN)	25 - 18	1B23	DRIVE, ROTARY SCREEN (-645200)	20 - 1
1D24	DRIVE GEAR, OIL PUMP (TH001 - EARLY DESIGN) (STD HP)(MKD RE53201)	25 - 17	9D21	DRIVE, SECONDARY COUNTERSHAFT	121 - 44
9E1	DRIVE GEARCASE, STRAW WALKER	121 - 48	9F5	DRIVE, STRAW CHOPPER, SHIELDS (-640300)	121 - 76
1H1	DRIVE HOUSING, STARTER (ND) (NO. 028000-3292) (6076)(EARLY DESIGN)	25 - 97	1C4	DRIVES, ENGINE FAN	20 - 8
4C7	DRIVE LEVER, CABLE AND SWITCH, HYDROSTATIC	50 - 2	9E21	DRIVES, STRAW CHOPPER (FRONT)	121 - 68
			9F1	DRIVES, STRAW CHOPPER, (REAR)	121 - 72
			9E23	DRIVES, STRAW CHOPPER, FINE CUT (FRONT)	121 - 70
			9F3	DRIVES, STRAW CHOPPER, FINE CUT (REAR)	121 - 74
			8F15	DRIVESHAFT, CONTOUR MASTER (660201-)	110 - 88

ALPHABETICAL INDEX - CONTINUED

GRID		PAGE	GRID		PAGE
5C19	DRUM AND SHOES, BRAKE	60 - 16	1G1	ELECTRONIC CONTROL UNIT (HH003) (LATE DESIGN STD. HP ENGINE) (149284-499999)	25 - 70
8E20	DRUM, CHAIN AND IDLER SHAFT, FEEDER CONVEYOR, SIDEHILL	110 - 68	1G3	ELECTRONIC CONTROL UNIT (HH004) (EARLY DESIGN ENGINE)	25 - 72
8F13	DRIVE SHAFT, HEADER - SH - (645301-)	110 - 86	1F24	ELECTRONIC CONTROL UNIT (TH001) (EARLY DESIGN STD. HP ENGINE)	25 - 68
6D19	DUAL ACCUMULATOR AND MOUNTING (-655200) ONE-HALF GALLON	70 - 40	2E18	ELECTRONIC CONTROL UNIT (6076HH031) (RB) (LATE DESIGN F.I.P.)	30 - 62
3E21	DUAL LEVEL MONITOR HARNESS, GRAIN TANK AND UNLOADING AUGER LIGHT	40 - 66	2E20	ELECTRONIC CONTROL UNIT (6076HH035) (RB) (LATE DESIGN F.I.P.)	30 - 64
4C16	DUAL WHEELS, WIDE-SPACED	50 - 11	1G3	ELECTRONIC FUEL INJECTION PUMP (HH004) (EARLY DESIGN ENGINE)	25 - 72
9D19	DUAL-RANGE CYLINDER DRIVE ADJUSTING BRACKET	121 - 42	2E4	ELECTRONIC FUEL INJECTION PUMP (6076 HH032)	30 - 48
9D9	DUAL-RANGE CYLINDER DRIVE GEAR CASE	121 - 32	2E10	ELECTRONIC FUEL INJECTION PUMP (6076HH032) (EARLY DESIGN)	30 - 54
9D15	DUAL-RANGE CYLINDER DRIVE INTERMEDIATE SHAFT MOUNTING	121 - 38	2E12	ELECTRONIC FUEL INJECTION PUMP (6076HH032) (ROBERT BOSCH)	30 - 56
9D17	DUAL-RANGE CYLINDER DRIVE INTERMEDIATE SHEAVE	121 - 40	2E14	ELECTRONIC FUEL INJECTION PUMP (6076HH036)	30 - 58
9D13	DUAL-RANGE CYLINDER DRIVE TIGHTENER	121 - 36	2E18	ELECTRONIC FUEL INJECTION PUMP (RB) (6076HH031) (LATE DESIGN F.I.P.)	30 - 62
9D11	DUAL-RANGE LOCKOUT ARM	121 - 34	2E20	ELECTRONIC FUEL INJECTION PUMP (6076HH03 5) (RB) (LATE DESIGN F.I.P.)	30 - 64
1C2	DUCT, ROTARY SCREEN AIR	20 - 6	3F21	ELECTRONICS MODULE, CENTRAL AND CIRCUIT BOARDS	40 - 90
1C1	DUCT, ROTARY SCREEN AIR (-640200)	20 - 4	8I7	ELEMENT, CHAFFER	120 - 62
7F12	DUCTS, HEATER AND AIR CONDITIONING	90 - 33	8I9	ELEMENT, CHAFFER	120 - 64
8D15	DUST FAN BELT, LH SIDE FEEDER HOUSE-RETROFIT INSTALLATION	110 - 38	8I11	ELEMENT, CHAFFER EXTENSION	120 - 66
8D13	DUST FAN, LH SIDE FEEDER HOUSE-RETROFIT INSTALLATION	110 - 36	8I15	ELEMENT, SIEVE	120 - 70
	E		9I7	ELEVATOR CONVEYOR CHAIN, SPROCKETS AND BEARINGS, TAILINGS	125 - 70
1G1	E.C.U. (HH003) (LATE DESIGN STD. HP ENGINE) (ESN 149284-499999)	25 - 70	10C24	ELEVATOR DRIVE TIGHTENER AND IDLER, CLEAN GRAIN	130 - 22
1G3	E.C.U. (HH004) (EARLY DESIGN ENGINE)	25 - 72	10C22	ELEVATOR GEARCASE AND SHEAVE, CLEAN GRAIN	130 - 20
2E12	E.C.U. (ROBERT BOSCH) (6076HH032)	30 - 56	9I5	ELEVATOR HOUSING, TAILINGS	125 - 68
1F24	E.C.U. (TH001) (EARLY DESIGN STD. HP ENGINE)	25 - 68	10C12	ELEVATOR SHAFT, SPROCKET AND SHEAVE, UPPER CLEAN GRAIN	130 - 10
2E16	E.C.U. (6076HH031) (DENSO) (EARLY DESIGN F.I.P.)	30 - 60	10D1	ELEVATOR SHIELDS, UPPER CLEAN GRAIN (-640528)	130 - 24
2E18	E.C.U. (6076HH031) (ROBERT BOSCH) (LATE DESIGN F.I.P.)	30 - 62	10D3	ELEVATOR SHIELDS, UPPER CLEAN GRAIN (640529-)	130 - 26
2E20	E.C.U. (6076HH035) (ROBERT BOSCH) (LATE DESIGN F.I.P.)	30 - 64	10F6	ELEVATOR, CLEAN GRAIN BELTS	170 - 3
2E14	E.C.U. (6076HH036)	30 - 58	10C6	ELEVATOR, LOWER AND CONVEYOR CHAIN, CLEAN GRAIN	130 - 4
2E4	ECU (6076HH030, HH032)	30 - 48	10C8	ELEVATOR, LOWER AND CONVEYOR CHAIN, CLEAN GRAIN	130 - 6
2E10	ECU (6076HH032) (EARLY DESIGN)	30 - 54	10C10	ELEVATOR, UPPER CLEAN GRAIN	130 - 8
3F19	ECU, ELECTRONIC CONTROL UNIT	40 - 88	7C5	ENGINE ACCESS DOOR, HANDRAILS, AND RADIATOR DOOR	80 - 8
3E11	EITHER START SOLENOID, 6076	40 - 56	7C19	ENGINE ACCESS PLATFORM AND STEP	80 - 22
5D3	EITHERAID START BUTTON	60 - 24	2G15	ENGINE AIR CLEANER AND INTAKE TUBES (6076, HH032) (645201-)	32 - 14
7H1	EITHERAID START BUTTON	90 - 72	3F17	ENGINE CIRCUIT BREAKERS	40 - 86
1F4	ELBOW, HEATER RETURN (EARLY DESIGN) (ESN -499999)	25 - 47	3F14	ENGINE CIRCUIT BREAKERS (-660200)	40 - 83
5C4	ELECTRICAL COIL - PARKING BRAKE VALVE (-640200)	60 - 1	3F15	ENGINE CIRCUIT BREAKERS (660201-)	40 - 84
3G1	ELECTRICAL CONNECTOR SERVICE KIT	40 - 94	7C11	ENGINE COMPARTMENT (-640200)	80 - 14
3G3	ELECTRICAL CONNECTOR SERVICE KIT	40 - 96	7C13	ENGINE COMPARTMENT (-640200)	80 - 16
10F1	ELECTRICAL HARNESS, DIAL-A-MATIC	160 - 4	7C15	ENGINE COMPARTMENT (640201-)	80 - 18
4C7	ELECTRICAL PLATFORM REEL LIFT SWITCH	50 - 2	7C17	ENGINE COMPARTMENT (640201-)	80 - 20
3G15	ELECTRICAL SERVICE OUTLET	40 - 108			
9D1	ELECTROMAGNETIC HEADER CLUTCH	121 - 24			
2E12	ELECTRONIC CONTROL UNIT (6076HH032) (ROBERT BOSCH)	30 - 56			
2E14	ELECTRONIC CONTROL UNIT (6076HH036)	30 - 58			
3F19	ELECTRONIC CONTROL UNIT (ECU)	40 - 88			